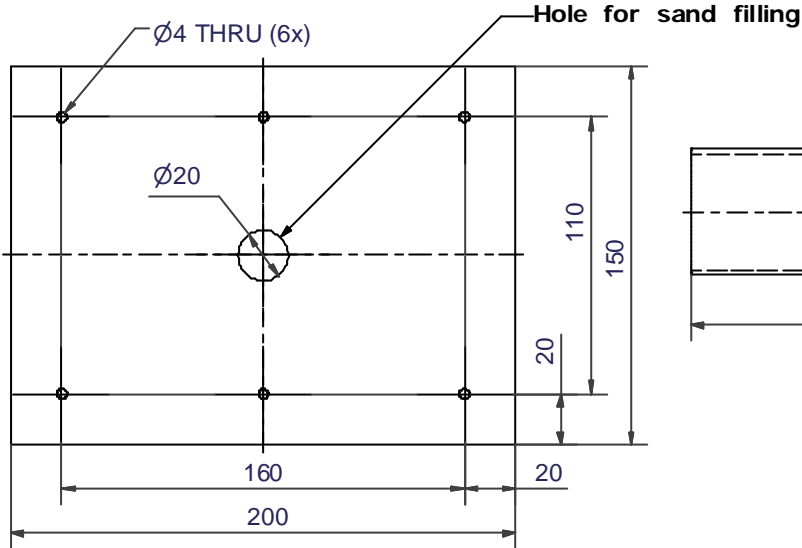


Top plate- metal



Hole for sand filling

Ø4 THRU (6x)

Ø20

110

150

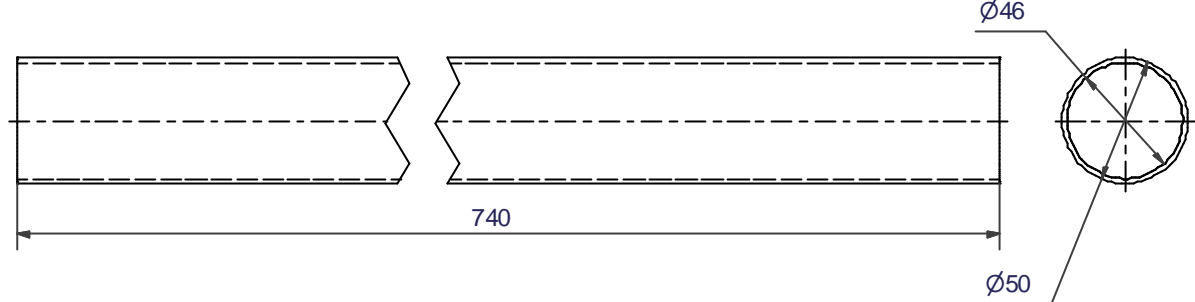
20

160

20

200

Tube

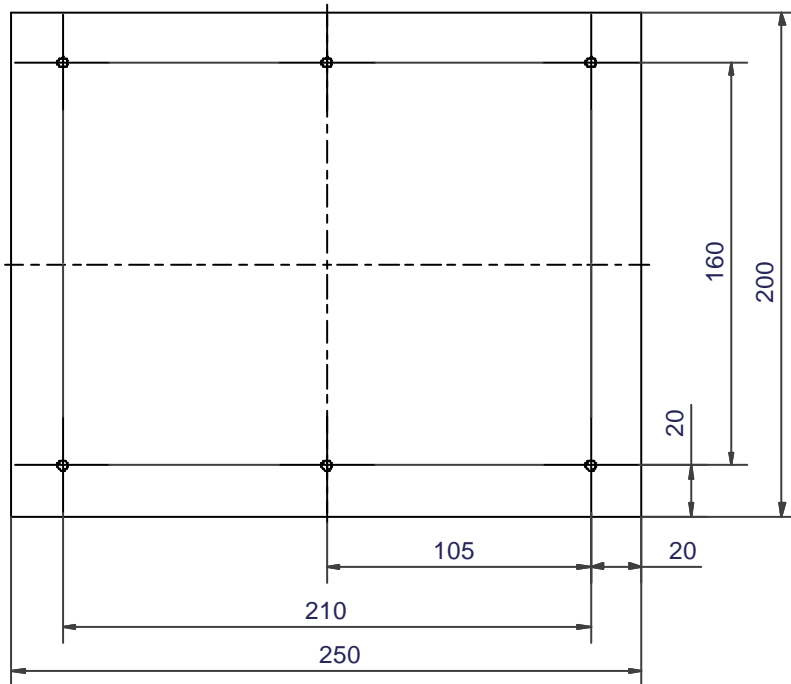


740

Ø46

Ø50

Bottom plate- metal



20

160

200

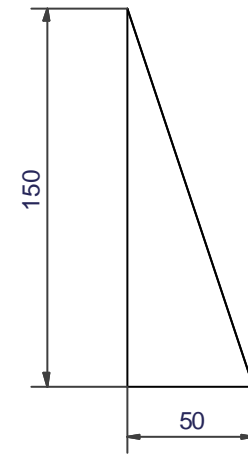
105

20

210

250

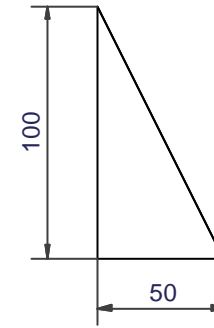
Support wing- bottom



150

50

Support wing- top

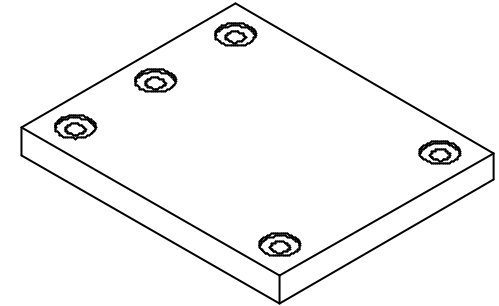
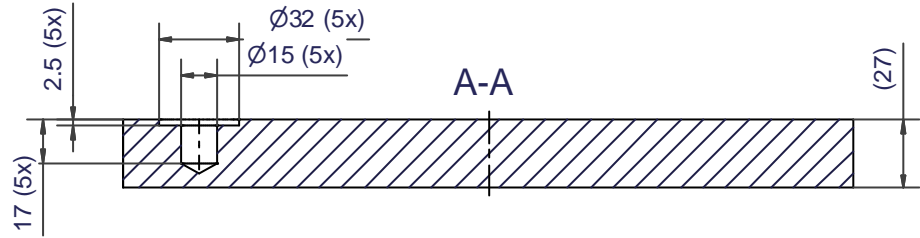


100

50

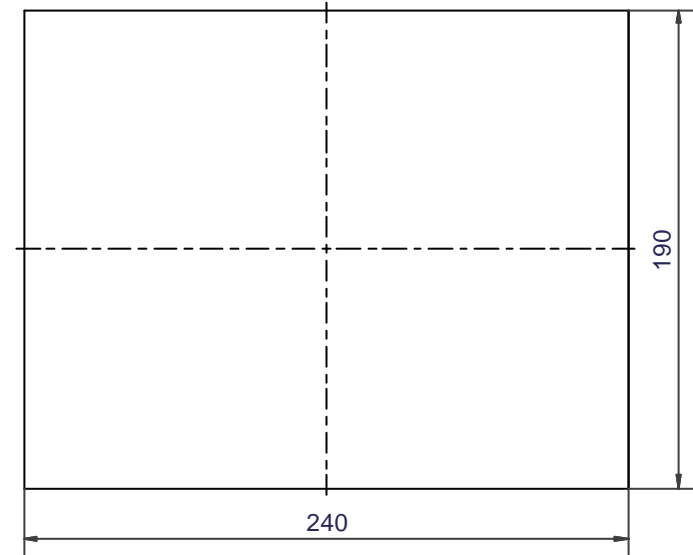
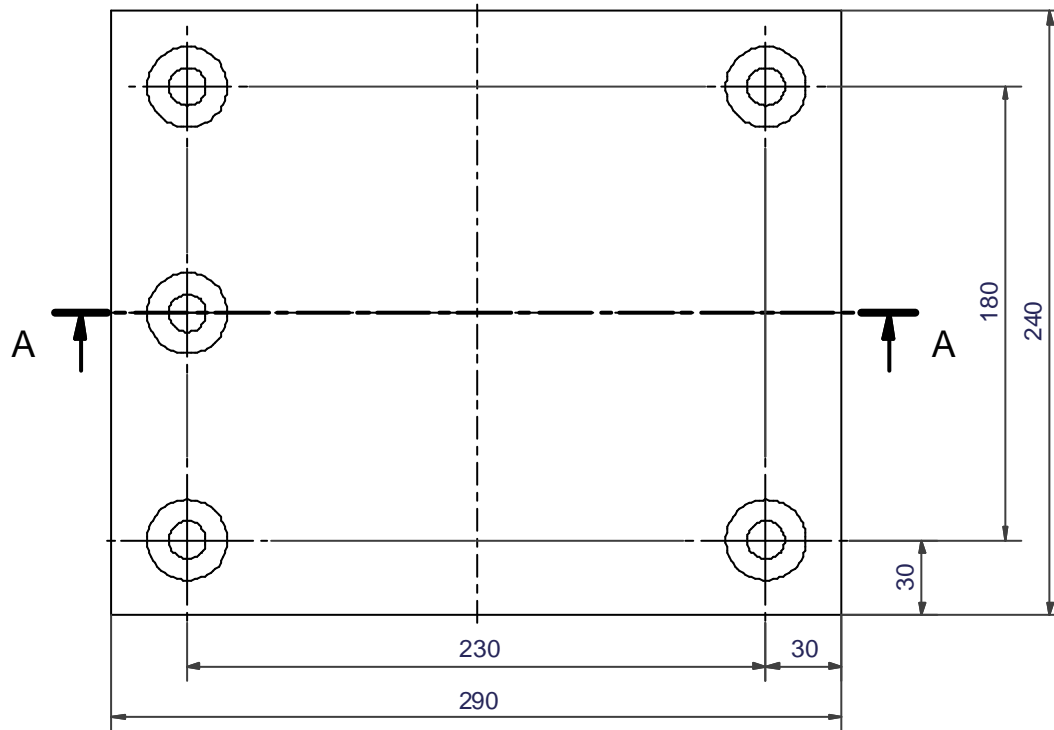
Material Steel, t=3mm		Scale 1:2	Owner ANDERSSON² Thomas Andersson Vasavägen 8, 5 str s 177 52 Järfälla, Sweden +46 (0)8 580 198 16	
Treatment Painted (optional)		Dimensions valid before surface treatment		
General tol. ISO-2768-mK	Hole-/shaft tol. N/A	Thread tol. ISO 965 6 g-6H	Gen. s surface roughness Ra 3.2	
Designed by MAGNUSA	Date 2003-01-13	Contr./Appr. by	Revised by	Revision date
Title Speaker Stand		System / Equipment / Component		Ref. No. TSAN 001
				Page 1(4)
				Revision A

Bottom Plate - wood

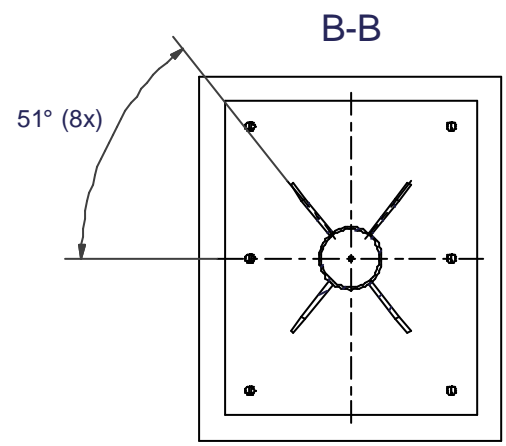
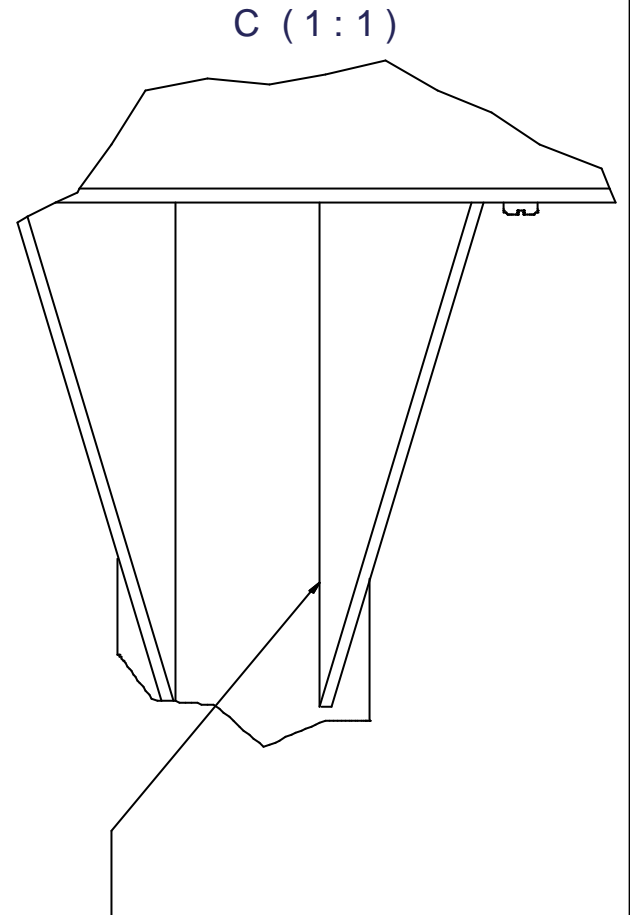
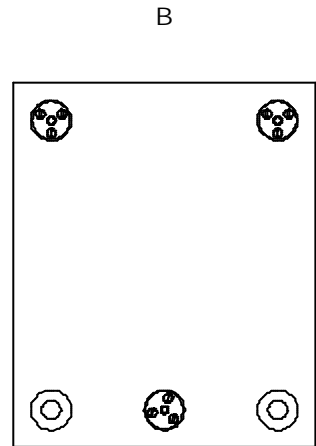
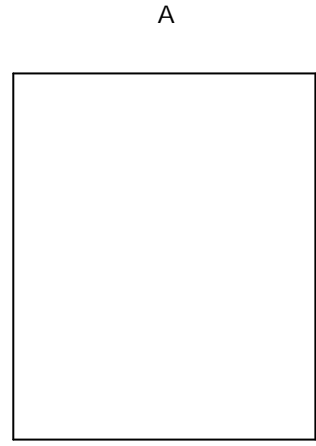
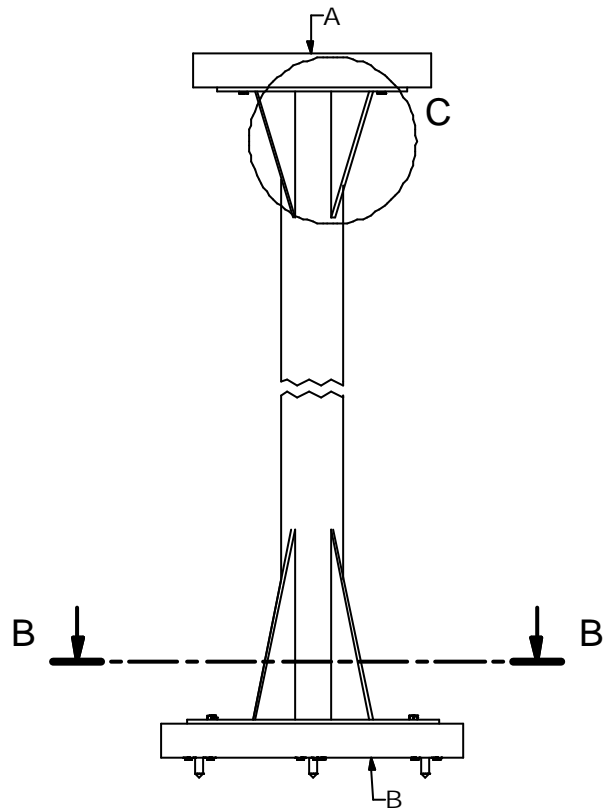


ISO- View of bottom plate (scale 1:4)

Top Plate - wood



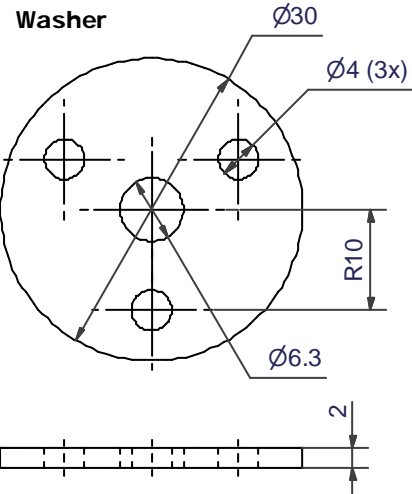
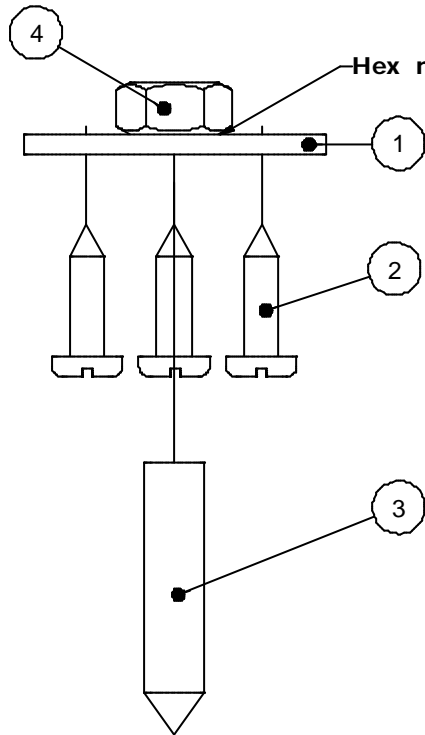
Material Wood (optional) t=27mm		Scale 1:2	Owner ANDERSSON² Thomas Andersson Vasavägen 8, 5 str:s 177 52 Järfälla, Sweden +46 (0)8 580 198 16	
Treatment Oil/paint (optional)		Dimensions valid before surface treatment		
General tol. ISO-2768-mK	Hole-/shaft tol. N/A	Thread tol. ISO 965 6 g-6H	Gen. s surface roughness Ra N/A	
Designed by MAGNUSA	Date 2003-01-13	Contr./Appr. by	Revised by	Revision date
Title Speaker stand		System / Equipment / Component		Ref. No. TSAN 001
				Page 2(4)
				Revision A



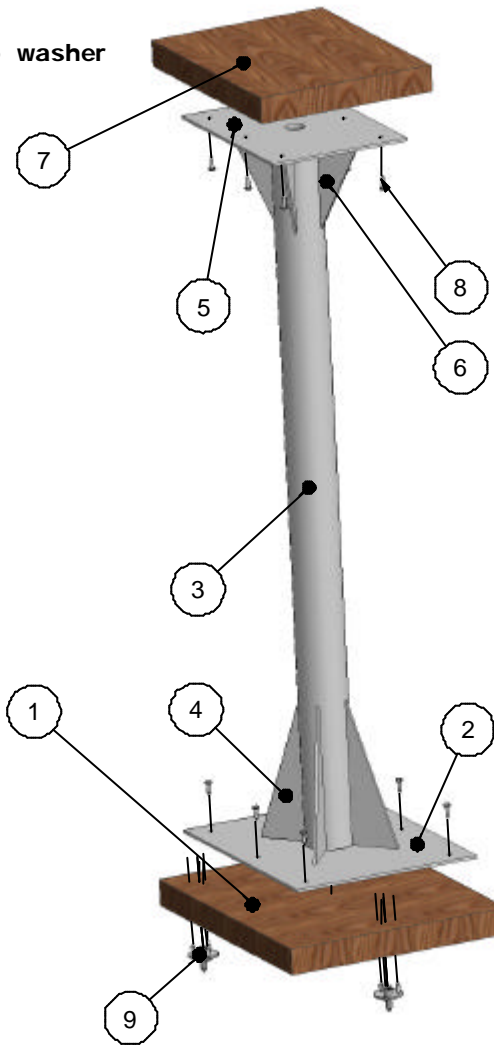
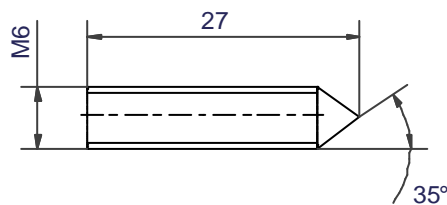
Spot welded (each corner on both sides)

Material		Scale 1:4		Owner	
Treatment		Dimensions valid before surface treatment		ANDERSSON ² Thomas Andersson Vasavägen 8, 5 str:s 177 52 Järfälla, Sweden +46 (0)8 580 198 16	
General tol. ISO-2768-mK	Hole-/shaft tol. N/A	Thread tol. ISO 965 6 g-gH	Gen. s surface roughness Ra 3.2	Ref. No.	
Designed by MAGNUSA	Date 2003-01-13	Contr./Appr. by	Revised by	Revision date	
Title Speaker Stand			System / Equipment / Component		Drawing No. TSAN 001
					Page 3(4)
					Revision A

Spike Sub-assembly (scale 2:1)



Bolt



Parts List - Speaker Stand

ITEM	QTY	PART NUMBER	DESCRIPTION
1	1	Bottom plate-wood	
2	1	Bottom plate-metal	
3	1	Tube	
4	4	Support wing-bottom	
5	1	Top plate-metal	
6	4	Support wing-top	
7	1	Top plate-wood	
8	21	ISO 1481 - ST 3.5 x 1 3 - C	(Sheetmetal) Tapping Screw
9	3	Spike Sub-assembly	

Parts List - Spike Sub assembly

ITEM	QTY	PART NUMBER	DESCRIPTION
1	1	Washer	
2	3	ISO 1481 - ST 3.5 x 1 3 - C	(Sheetmetal) Tapping Screw
3	1	Bolt	
4	1	ISO 4032 - M6	Hex Nut

Material N/A		Scale		Owner ANDERSSON² Thomas Andersson Vasavägen 8, 5 str s 177 52 Järfälla, Sweden +46 (0)8 580 198 16	
Treatment N/A		Dimensions valid before surface treatment		Gen. s surface roughness Ra 3.2	
General tol. ISO-2768-mK		Hole-/shaft tol. N/A		Thread tol. ISO 965 6 g-6H	
Designed by MAGNUSA	Date 2003-01-13	Contr./Appr. by	Revised by	Revision date	Ref. No.
Title Speaker Stand			System / Equipment / Component		Drawing No. TSAN 001
					Page 4(4)
					Revision A